

DEVELOP

Dynamic balance

www.develop.eu

DEVELOP Enterprise Suite

Efficient in- & output management



DEVELOP Enterprise Suite

Streamlined administration, improved efficiency

Business efficiency is all about saving time and controlling costs. As corporate IT environments get more complex, the job of configuring, monitoring and managing all a company's output devices – printers and multifunctionals – is more challenging than ever. But with the help of the DEVELOP Enterprise Suite administrators, IT specialists and users can streamline their work, minimise their effort and achieve more in less time. The benefits are clear: significant time savings, tight control of costs and efficient handling of all output devices.



The Enterprise Suite consists of five individual software components and offers a comprehensive yet modular approach to the control and management of user authorisation and function access, the setup and monitoring of in- and output devices, and the control and visualisation of all related costs. Right now, no other integrated suite of applications offers such an extensive range of functions: monitoring, device settings and deployment, firmware management, user access management by function, device-based accounting, cost management, individual secure printing, rule-based printing, panel personalisation, ID card and biometric authentication management.

> **Device Manager**

is the core application of the Enterprise Suite and governs the central implementation of system network configurations as well as central status monitoring.

> **Account Manager**

is essential for the central collection of detailed counter readings and for visualising resultant cost analyses.

> **Authentication Manager**

facilitates the central management of the user database and user rights.

> **My Print Manager**

is the output management module in the Enterprise Suite that enables the deployment of flexible yet secure follow-me printing and the implementation of print rules that effectively reduce wasteful printing.

> **My Panel Manager**

allows customised user profiles, personalised address books and frequently used scan or fax destinations to be individually created on the operating panel of all networked devices.

These five modules can be used individually or in any combination and flexibly configured in a networked environment to respond to changing business needs.

Device Manager

Greater productivity through automated central monitoring

As a company's fleet of printers and multifunctionals grows, the administrator's essential task of monitoring all networked output devices, their status, availability and performance becomes ever more complex. If printers and multifunctionals cannot be used because of technical problems or a shortage of consumables, office workers will not be able to work normally – with all the negative effects that has on overall productivity. The precondition for optimising a corporate output fleet and reducing overall document production costs is the efficient organisation and handling of the setup, monitoring and management of output devices.

As the core element of the Enterprise Suite, the Device Manager streamlines the management of all output devices in a corporate network while helping the administrator to ensure consistently high productivity from all registered output devices with real-time monitoring of their system status and condition. This software provides a central device database and monitoring functionality, plus the added advantage of fast deployment and a cloning feature. As a one-tool-for-all solution, the Device Manager allows all devices to be accessed, set up and monitored remotely – and automatically if required.



Features

- › Comprehensive monitoring with a detailed overview of the status of supplies as well as warnings and error messages for all networked output devices
- › Automatic setup for extensive print environments, with devices grouped into logical clusters using custom criteria
- › Customisable status reporting where the administrator can automate status messages and customise who should receive which type of message for specific devices or device groups
- › Fast and simple centralised counter reading and basic analyses, including output trends over a specific time period
- › Convenient deployment of firmware for devices via the Device Manager web service
- › Intuitive web-based interface providing comprehensive information and an overview of all settings
- › Real-time status information on output devices always available

Benefits

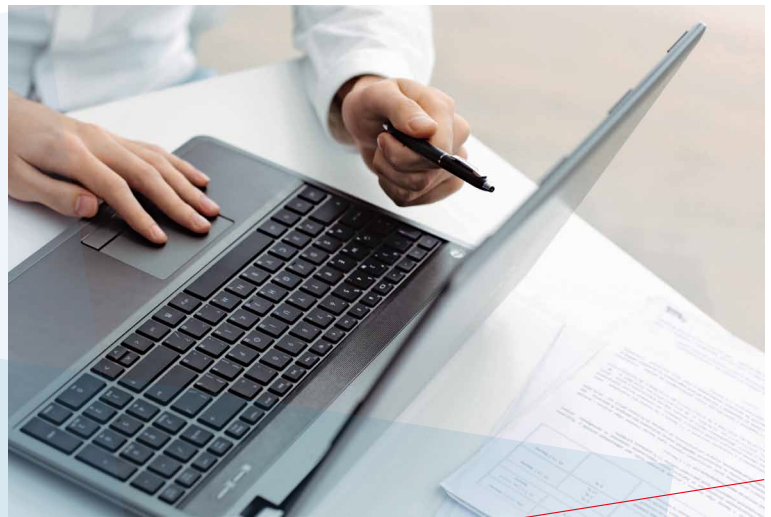
- › Higher quality internal IT services through reliable and efficient monitoring
- › Time savings since an administrator no longer needs to access setting menus at each output device
- › Instant attention to problems and bottlenecks thanks to streamlined status recalls and automatic email notification
- › Improved system productivity from maximised uptime, with a positive impact on overall office productivity
- › Enhanced user motivation through maximum system availability and minimal need for user intervention

Account Manager

Enhanced print cost transparency and control

Costs can easily get out of control in today's corporate print environments. But assigning and managing user roles and access rights can be a complex, time-consuming business. Moreover, data collection and cost reporting can become an almost impossible task with a disparate fleet and equipment in multiple locations. This is where the Account Manager can be a big help to administrators in large and mid-sized companies with high print volumes and multiple output devices.

Designed to deliver comprehensive print output and cost control, the Account Manager provides print-intensive environments with the means to self-assess print costs and enforce cost management procedures. By facilitating the creation of print budgets and enhancing print cost transparency, this software helps to eliminate unnecessary printing and generate significant cost savings.



Features

- › Automatic tracking of all print, copy, scan and fax activities for users, groups, cost centres or projects
- › Flexible cost allocation by linking users to a specific cost centre or individually selecting a cost centre or project before printing
- › Accurate print cost calculations, even for a heterogeneous print infrastructure, through the assignment of multiple pricing tables to individual devices or groups of similar devices
- › Flexible quota assignment with separate quotas for colour and b&w printing for individual users or user groups
- › Speedy creation of comprehensive output reports (as PDFs) by selecting from more than 30 preconfigured report components
- › Automation and export of all reports to a predetermined destination, with administrators only needing to visit the reporting engine for new report types or minor amendments to existing reports
- › Comprehensive cost assignment for users and accounts so all costs can be reliably allocated and correctly invoiced

Benefits

- › Avoidance of time-consuming manual data collection through efficient output and cost reporting
- › Access to all counter readings via a single interface gives, saving administrators time and effort
- › Increased user awareness of printing costs and hence optimisation of output volumes per device
- › Enhanced productivity due to optimisation of output devices and printer infrastructure in line with usage reports
- › Cost savings through centralised limit management, as individual output limits avoid unnecessary printing and keep costs inside budgetary limits

Authentication Manager

Efficient centralised management of users and access rights

Administrators know how time-consuming it is to set up scores of users and allocate individual user rights on numerous output devices. And since nothing is as constant as change, new users frequently have to be added, access rights amended or users deleted.

Designed for comprehensive print access and user rights' control, the Authentication Manager takes administrator convenience to a new level. This software provides a reliable means of controlling the scope and scale of access to devices as well as the appropriate authentication mechanisms.



Features

- › Convenient management of all users with access to output devices via a Central Authentication Manager database
- › Synchronisation with existing user directories (Windows Service Active Directory, LDAP and Novell Directory Services) enabling an administrator to manage users in a single system
- › Easy creation of permission templates and user roles, with the different user roles defined just once and permissions then applied to individual users and groups
- › High granularity in definition of device access permissions, with function templates including user rights, colour access, document storage on device hard disks and printing from USB sticks
- › Centralised management of authentication types – card, user credentials or convenient PIN authentication
- › Optional support for high-security biometric authentication, with all biometric data encrypted and centrally secured in the optional biometric authentication database
- › Real-time output limitations with individual adjustments per user (in combination with Account Manager)

Benefits

- › Greater transparency and time savings through centralised control of user rights on all output devices
- › Lower document output costs through limitation of colour user rights
- › Enhanced efficiency and valuable manpower and time savings through centralised setup of authentication modes
- › Faster user login and less administrative effort thanks to compatibility with ID card and biometric authentication systems
- › Savings from more effective cost control, as users' volume limitations apply across all networked output devices

My Print Manager

Secure and flexible follow-me printing

In corporate environments where output devices are installed centrally and can be accessed by many users, it is vital to establish viable secure printing procedures and print policies.



With My Print Manager follow-me printing is available via efficient queue management. You can print anywhere, any time thanks to the total mobility and flexibility offered by the print-to-any-supported-device function. And as documents can only be printed after authentication, this function also enhances output security and eliminates printing mistakes to boost productivity and cost efficiency. My Print Manager's rule-based printing option lets administrators define a set of print rules that are triggered by specific conditions. For example, if a user decided to print a mail, this would trigger a rule that temporarily moves this job to a pull-print queue and reminds the user that e-mails should not be printed, if at all possible. Whether you want to avoid wasted paper by enforcing double-sided printing, restrict printing outside working hours for certain departments or reroute jobs to more cost-efficient output devices, My Print Manager allows you establish a corporate print policy flexibly, conveniently and in no time at all.

Features

- › Central management of print queues and settings, providing each user with a central personal print queue for secure print release
- › Jobs only released after authentication by the job owner via PIN code, card, user credentials or biometric authentication at the output device
- › Support for distributed printer environments
- › Eco-friendly green printing rules automatically convert single-sided to double-sided prints
- › Documents likely to be reprinted can be marked as a favourite job, thus triggering the file to remain in the queue for future use
- › Custom print rules can be created for controlling colour printing and the printing of e-mails and full-page pictures
- › Complete printing mobility (anywhere) and flexibility (anytime) with printing to any supported device
- › Failover printing automatically reroutes jobs if a selected printer is unavailable
- › Gives authenticated users the choice of printing all jobs ("ID and print") or selecting individual ones, and marking specific jobs as favourites

Benefits

- › Enhances output security by printing documents by authentication only
- › Avoids security risks from unclaimed prints being left at output devices
- › Eliminates mistakes caused by sending prints to the wrong output device
- › Enhances eco-friendly printing by avoiding unintended printing and thus reducing paper waste
- › Increases productivity and cost efficiency

My Panel Manager

At home on any system

The growing demand for personalised user interfaces is not only a result of the increased use of smart devices in everyday life. In corporate environments with many output devices users frequently have to battle with preconfigured settings that vary from one output device to the next. Especially in large organisations, address books can have thousands of entries, although most employees only keep regular contact with a small circle of co-workers. In such cases panel personalisation is a highly efficient, time-saving solution.



The My Panel Manager enables the user interfaces on DEVELOP devices to be easily personalised. Users can simply create their very own profiles, including individual display settings, a personal address book and their own scan or fax destinations. After logging in, they automatically access their individual user profile at any connected output device right. This puts an end to the hassle of different setups on each output device and thousands of unwanted entries in address books. Besides, it also reduces the amount of work an administrator has with the output devices. Once the applicable output devices have been selected for My Panel Manager, the users do the rest.

Features

- › Simple and straightforward customisation of the device panel contents to suit individual preferences, including types and order of functions directly available on the main screen, choice of screen displayed after login, shortcuts to favourite functions and display language
- › Scan-to-Me function that allows direct scanning to a user's personal email address (in conjunction with the Active Directory) via an automatically registered "Me" button
- › Scan-to-Home function that looks up the user's personal directory and automatically registers it as a "Home" scan destination on the user's panel
- › Personalised address book for a user's favourite scan and fax destinations
- › Remote customisation via the simple and straightforward web-based interface of the Enterprise Suite

Benefits

- › Increased user convenience with personalised profiles featuring an individually adapted panel layout
- › Instant availability of frequently used functions
- › Faster access to frequently used scan and fax destinations
- › Operation time minimised and overall productivity increased through familiar user interface on all output devices after login
- › Faster completion of printing, copying, scanning and faxing jobs so office workers can get on with their normal work
- › Considerable reduction in administrator's work load through user-activated panel personalisation

DEVELOP Enterprise Suite

SYSTEM REQUIREMENTS

Operating systems

Windows XP Professional SP3 or later (32)
Windows XP Professional SP2 or later (64)
Windows Server 2003, Standard/Enterprise SP2 (32/64)
Windows Server 2003 R2, Standard/Enterprise SP2 (32/64)
Windows Vista Business/Enterprise/Ultimate SP2 (32/64)
Windows Server 2008 Standard/Enterprise SP2 (32/64)
Windows Server 2008 Standard/Enterprise without Hyper-V SP2 (32/64)
Windows 7 Professional/Enterprise/Ultimate SP1 (32/64)
Windows Server 2008 R2 Standard/Enterprise SP1 (32)
Windows 8 Professional/Enterprise (32/64)
Windows Server 2012 Standard (32)

Hard disk space

500 MB or higher (for initial installation)

CPU

Intel Core 2 Duo E8600 3.33 GHz or higher

.NET Framework

Microsoft .NET Framework 2.0 SP2
Microsoft .NET Framework 3.5 SP1
Microsoft .NET Framework 4.0 or later

Internet information services

Microsoft Internet Information Services 5.0 or later

Database server

Microsoft SQL Server 2005 Express/Standard/Enterprise
Microsoft SQL Server 2008 Express/Standard/Enterprise
Microsoft SQL Server 2008 R2 Express/Standard/Enterprise
Microsoft SQL Server 2012 Express/Standard/Enterprise

Supported languages user/admin interface

English, French, Italian, German, Spanish

Supported ineo devices

Monitoring

Any brand's multifunctional devices and printers with MIB support.

Remote setting

DEVELOP ineo devices

Authentication Manager

DEVELOP ineo devices with OpenAPI 3.x

Account Manager

DEVELOP ineo multifunctional devices and printers: Accounting of third party devices supported via Print Log Tool (Total Counters only)

My Print Manager

DEVELOP ineo devices with OpenAPI 3.x for follow-me print function:

Rule-based printing option supports any output device, though compatibility between print drivers and output devices must be ensured.

My Panel Manager

DEVELOP ineo A3 devices with OpenAPI 3.x

Please contact your dealer for further information.

Your DEVELOP Partner:

All technical data correspond to knowledge available at the time of going to print. Konica Minolta reserves the right to make technical alterations.

DEVELOP and ineo are registered trademarks/product titles owned by Konica Minolta Business Solutions Europe GmbH. All other brand or product names are registered trademarks or product titles of their respective manufacturers. Konica Minolta does not accept any liability or guarantee for these products.

March 2014